



*Details*

**Just Northwest of the Interstate-369 Highway 59 interchange, with access from Terry Street and the frontage road.**

**Ideal location for industrial, multi-family, a residential development, a truck stop, retail, etc.**

**Owner willing to subdivide**

**Easy access to Texarkana's loop system, with I-30 and I-49 less than 2 miles away, and close proximity to Texarkana Regional Airport.**

**151 +/- acres**

**\$1,600,000.00**

**Individual tract pricing available upon request.**

*Attractions*



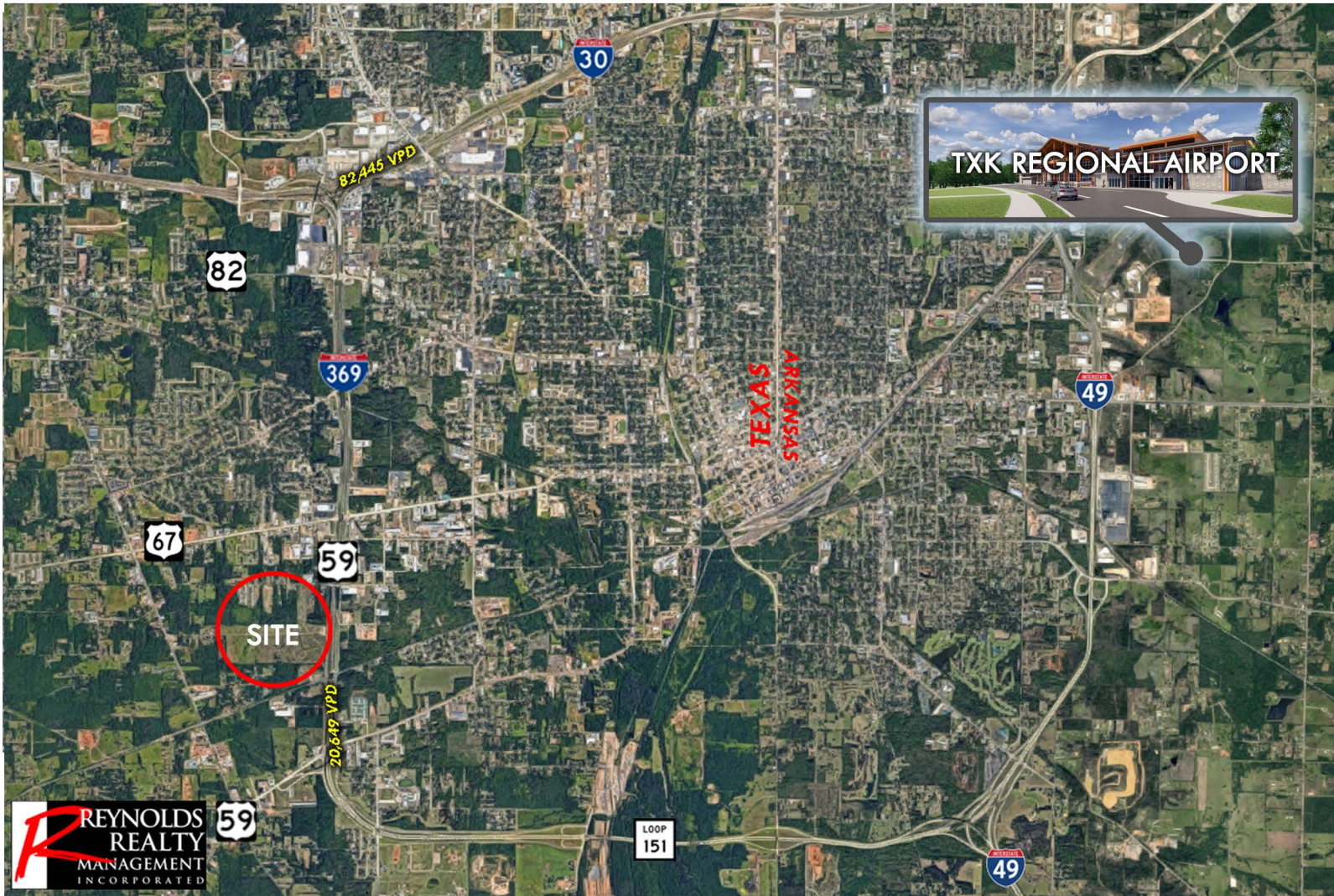
Richard Reynolds - RichardHReynoldsJr@gmail.com  
Skylar Rogers - BlakeSkylarRogers@gmail.com



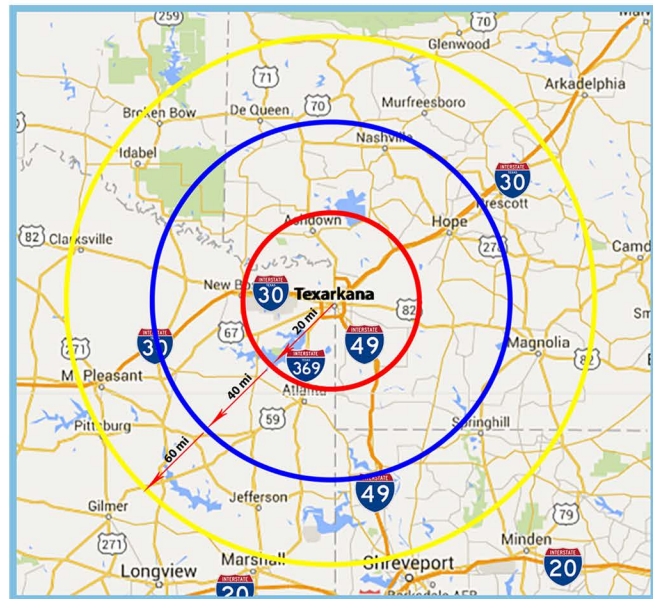
**Reynolds Realty Management, Inc. | 903.832.3700 | ReynoldsRealtyMgmt.com**

The information contained herein was obtained from sources deemed to be reliable. However, Reynolds Realty Management, Inc. makes no guarantees, warranties or representations as to the completeness or accuracy thereof.





<i>Demographics</i>	<u>20 mi</u>	<u>40 mi</u>	<u>60 mi</u>
<b>Est. Population</b>	134,239	225,389	429,792
<b>Avg. HH Income</b>	\$54,860	\$52,490	\$52,913
<b>Total Housing Units</b>	59,054	101,519	196,116
<b>Med. Home Value (O/O)</b>	\$100,959	\$90,458	\$89,700



*Traffic Counts*

 **20,649 VPD**

 **82,445 VPD**

Richard Reynolds - RichardHReynoldsJr@gmail.com



**Reynolds Realty Management, Inc. | 903.832.3700 | ReynoldsRealtyMgmt.com**

The information contained herein was obtained from sources deemed to be reliable. However, Reynolds Realty Management, Inc. makes no guarantees, warranties or representations as to the completeness or accuracy thereof.



**TERRY STREET**

*Mayo*

INTERSTATE  
**369**

  
Value Truck

**WATERWORKS ROAD**

**59**

 **REYNOLDS  
REALTY  
MANAGEMENT  
INCORPORATED**